

September 2009 Newsletter

Dear «Preferred_Name»,

On July 28, 2009, Governor Schwarzenegger signed a package of bills to close the State's \$23 billion budget shortfall. **This Fiscal Year 2009-10 State Budget includes actions that will cost the City of San Jose nearly \$100 million in lost funding.** The budget also cuts funding to state programs including education, transportation, public safety, recreation and support for people with disabilities and others receiving special assistance.

The State budget borrows \$20 million from the City general fund:

The State's suspension of Proposition 1A will divert \$1.935 billion of local government property tax (8% of total local property tax revenues) in Fiscal Year 2009-10. This diversion will remove \$20 million in funding from the City's general fund which supports local police and fire, parks and transportation. The State must repay the amount shifted, with interest, no later than June 30, 2013.

The State budget borrows \$62 million from the San Jose Redevelopment Agency:

Redevelopment funds have financed the San Jose Convention Center, HP Pavilion and neighborhood improvement projects. These funds can be used in the future to bring the A's Baseball Team to San Jose and support new companies growing in our City. A similar attempt to "take" redevelopment funds in 2008-09 was found to be unconstitutional, and the California Redevelopment Association is preparing to file another lawsuit to challenge the State's 2009-10 budget action.

Deferred payments will cost the City \$130,000 in lost interest:

The State is deferring payments for the July-December 2009 monthly Highway Users Tax and Proposition 42 funds until January 2010.

Impact to the City of San Jose:

The San Jose City Council unanimously balanced an \$84 million deficit in June of this year. Unfortunately, the additional \$20 million impact to the general fund may put in jeopardy some of the same programs that we were able to save in this year's city budget cycle. We will critically examine all of our planned capital projects using redevelopment funding and determine which projects can be postponed. The City is considering borrowing money to cover the lost revenue until the State pays us back in 2013.

Contact your representatives:

To learn more about the state budget, ask questions or share concerns, please contact your State Assembly or Senate representative. Find your district [here](#).

It helps me to know your reactions. Please email me your concerns as well at district10@sanjoseca.gov.

Stay tuned and stay well,



September 2009
Newsletter
print version is
[available here](#)

(Click on any of the images
below to enlarge them)



Welcome back!
School is back in session and
with it comes traffic
congestion and dangerous
conditions for children
walking to school.

Please take a moment to
view this [30 second video](#)
on school traffic safety.
We can't afford any
accidents involving our
children.

Nancy Pyle

Nancy Pyle
Councilmember, District Ten

Councilmember Pyle's trip to the Baltic States Part II – Vilnius, Lithuania —

Lithuania, the largest of the three Baltic countries, is situated along the southeastern shore of the Baltic Sea and shares borders with Latvia, Belarus, Poland and Kaliningrad. Lithuania is a member of NATO, the Council of Europe, and the European Union. Its population is 3.6 million and its capital and largest city is Vilnius. In 2009, Vilnius became the European Capital of Culture. Fashion designers and Relais et Chateau luxury accommodations plus a downtown casino add to a 'country club' atmosphere to match their modern, upscale, high-rise, new downtown. We discovered that weddings occurred every half hour at the cathedral across the street from our hotel, the Radisson Astorija. Partying on the square was non-stop and continued well into the AM hours—even the rain failed to dampen the party atmosphere!

During the 14th century, Lithuania was the largest country in Europe. Present-day Belarus, Ukraine, and parts of Poland and Russia were territories of the Grand Duchy of Lithuania. In 1569 Poland and Lithuania formed a new state, the Polish-Lithuanian Commonwealth, which lasted more than two centuries, until neighboring countries systematically dismantled it from 1772 to 1795, with the Russian Empire annexing most of Lithuania's territory. In the aftermath of World War I, Lithuania's Act of Independence was signed on February 16, 1918, declaring the re-establishment of a sovereign state. In WWII, Lithuania was occupied first by the Soviet Union then Nazi Germany. As World War II neared its end in 1944 and the Nazis retreated, the Soviet Union re-occupied Lithuania. Population losses of Lithuania during WWII are estimated at 780,000 (the population was only 2 million at the time). A large and influential Jewish community was almost entirely eliminated. Believers and clergy also suffered greatly during the Soviet occupation, with many killed, tortured or deported to Siberia.

On March 11, 1990, Lithuania became the first Soviet republic to declare its renewed independence. Considering that Lithuania has only been independent since 1990, their progress is phenomenal! Post-Soviet Lithuania had one of the fastest growing economies in the European Union. Lithuania has twice as many people with a higher education level than the EU average and this proportion is the highest in the Baltics. Also, 90% of Lithuanians speak their native tongue plus at least one foreign language. Half of the population speaks two foreign languages, mostly Russian, English and Polish. Vilnius University is one of the oldest universities in Northern Europe and the largest university in Lithuania.

The Lithuanian head of state is the President, elected directly for a five-year term, serving a maximum of two consecutive terms. The post of President is largely ceremonial although it includes foreign affairs and national security policy. The President is also the military commander-in-chief. In 2003, before joining the European Union, Lithuania had the highest economic growth rate among all candidate and member countries. Between 2004 and 2008 the average annual growth in GDP was over 7.5%. Most of Lithuania's trade is within the European Union.



Baltic Sea Region



Lithuania



Pedestrian Streets

Lithuania is a country with high average income although they are just above 60% of older EU member countries' salaries. According to published figures, EU membership fueled a booming economy, increased outsourcing into the country, and boosted the tourism sector. There has been a gradual but consistent shift towards a knowledge-based economy with special emphasis on biotechnology. Speaking of tourism, there are an abundance of historical buildings and artisan street vendors to occupy one's time. We bought one small painting which will forever be a reminder of our good times in Vilnius.

See additional photos at the end.

Community Meeting Regarding Almaden Burglaries—

TJ Martin Park Neighborhood Association and Councilmember Pyle would like to invite you to attend a meeting about the recent increase in burglaries in the area. Police Lt. Harper will provide the latest information on the burglary investigation. The meeting will also feature information on the neighborhood watch program and simple steps you can take to secure your home.

Thursday, September 10th

6:30 pm – 8:00 pm

Almaden Winery Community Center

5730 Chambertin Drive

San Jose, CA 95118

New Section of the Bay Area Ridge Trail Opening —

The Bay Area Ridge Trail when completed will be a 550+ mile trail encircling the San Francisco Bay along the ridge tops of the nearby hills that is open to hikers, equestrians, mountain bicyclists, and outdoor enthusiasts of all types. Coyote Creek Ridge Trail is one San Jose segment of this large scale Bay Area trail project and opened on Saturday, August 15th! Councilmember Pyle attended the event as the Liaison to the San Jose Parks and Recreation Commission and a passionate open space advocate. Trails are important because they bring a balance to the community. They provide a place to walk, run, bike and relax. They also help many people commute to and from work. Most importantly trails offer access to our natural environment and an opportunity to experience a slower pace. With San Jose's Green Vision and its 100-mile interconnected trail network goal, we are closer to obtaining this balance between nature and city life than ever before!

Airline pilots pick San Jose as best airport! —

The Air Line Pilots Association, International (ALPA) has selected Mineta San Jose International Airport (SJC) as its "Airport of the Year" for 2008. Pilots praised SJC's efforts to address pilot concerns throughout its ongoing multi-year, \$1.3 billion airport modernization program. ALPA presented the pilot-friendly "Airport of the Year" Award to SJC during ALPA's Air Safety Forum held in Washington, D.C.

City Website Survey —

The City of San Jose is conducting a study of its use of the Internet to increase its effectiveness in informing, communicating, and providing services via the Web. An important part of this study is to get feedback from users such as you about how well the City web site works for you. Please take a few minutes to take our survey and make your voice heard

[www.surveymonkey.com/s.aspx?
sm=gUY49QwFEF1oVitgJUYphQ_3d_3d%22%3eClick](http://www.surveymonkey.com/s.aspx?sm=gUY49QwFEF1oVitgJUYphQ_3d_3d%22%3eClick).



**Bay Area Ridge Trail
Dedication**



Bay Area Ridge Trail

District 10 interns



Karen Leung

Interns in District 10 Office —

Thank you Interns! It was a pleasure to have three wonderful young women helping the District 10 office this summer. Thank you Fana, Heather and Karen!

Karen Leung:

Karen Leung graduated from Leland High School in 2008 where she was heavily involved in the speech & debate program and she developed a love of public speaking. Karen is starting her second year at UC Berkeley this fall, double majoring in political science and peace & conflict studies. Karen helped the District 10 office this summer by researching recall elections at the local and state level. "I really enjoyed interning with Nancy Pyle this summer, because it let me become more familiar with the local government system and the complex processes involved with recall elections." —Karen Leung

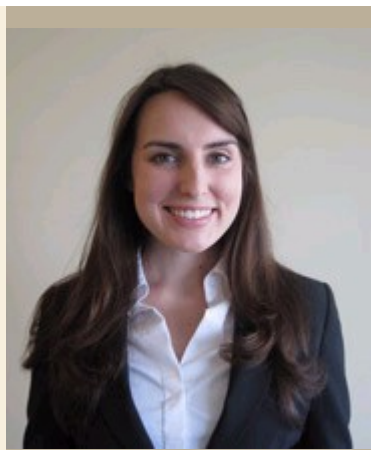
Heather Wilkinson:

Heather Wilkinson is starting her senior year at the University of California-Los Angeles this fall, studying Global Studies and Political Science. Heather grew up in District 10 and spent this past summer helping the District 10 office by researching Bay Area transportation funding. "Interning with Councilmember Pyle was a great experience. I was able to learn about different aspects of local government and how City Hall works for the residents of San Jose." —Heather Wilkinson

Fana Yohannes:

Fana Yohannes graduated from Pioneer High school in June 2009, where she served as Student Body President, as well as Student School Board member of the San Jose Unified School District. Fana will be kicking off this fall as a freshman at Santa Clara University and intends to major in Political Science and minor in Pre-law. This summer Fana helped coordinate National Night Out with the Hoffman Via Monte Community and collected information for the new District 10 Youth Web Page. "I loved the experience that I have had while working with Councilmember Pyle's office, I have expanded my perspective with community relations, and I can easily give you the 4-1-1 on what's going on in the San Jose area for teens after researching for the Youth Website!" —Fana Yohannes

*** Councilmember Pyle offers summer internships for college students. Interested candidates are invited to submit resumes during the spring to district10@sanjoseca.gov.



Heather Wilkinson



Fana Yohannes



Presidential Palace



Street Vendors

"The Charger Invitational"
Golf Tournament
Presented By
Leland Booster Club

Come and join us for the inaugural "Charger Invitational" golf tournament to be held **September 25th at Santa Teresa Golf Course.**

With a **shotgun start at 1 pm** your donation to the Leland Athletics program will include: Four person scramble, 18 holes of golf with cart, Tee prizes, BBQ lunch, Games and refreshments on the course and Awards Dinner

Play as a single, twosome or bring a foursome! There will be prizes, raffle and a silent auction

We look forward to seeing you all there and helping to keep Leland Athletics among the very best in the area.

<http://leland.sjUSD.org/>

Have a say in San Jose's future! —

The Envision San Jose 2040 General Plan Update is creating the blueprint for the City's future growth and development, and the City of San Jose would like your input.

Complete our survey and you will be eligible to win complimentary tickets from San Jose's arts, entertainment, and cultural organizations! You can also learn more about the Envision San Jose 2040 city planning project, provide feedback in our discussion forum, or post photos.

Follow these simple instructions to participate:

1. Go to WWW.WIKIPLANNING.ORG
2. Enter your e-mail address
3. Use the password 2040

Our goal is to have more than 10,000 participants, diverse in age and background.

Thanks! Your participation will make a difference in San Jose's future!

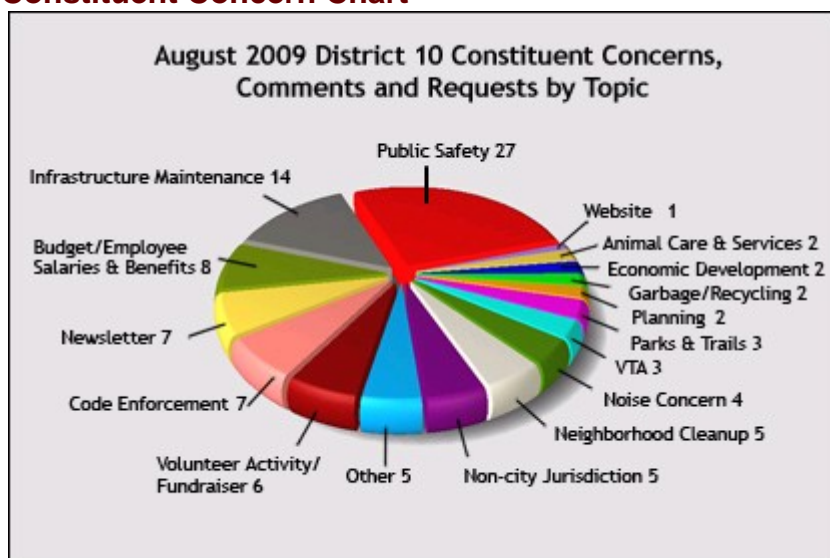


Town Square



Lithuanian National Museum

Constituent Concern Chart



Contact Us

Office of Councilmember
Nancy Pyle
Councilmember, District Ten

T- (408) 535-4910
F- (408) 292-6478
E- district10@sanjoseca.gov

www.sanjoseca.gov/district10

District 10 Staff

Kathy Sutherland
Chief of Staff

Linda Alexander
Executive Assistant/Scheduler

Stephanie Holm
Policy Analyst

Nitila Patel
Council Assistant

Laura Cowan
Council Assistant

Upcoming Council Meetings

Tuesday, September 1st, September 15th, September 22nd and September 29th at 1:30 pm and Tuesday September 15th at 7:00 pm

Community Calendar

Almaden Senior Association Meeting

Wednesday, September 2nd— 9:45am – 11:00am
Almaden Community Center; 6445 Camden Avenue
www.almadenseniors.org/

District 10 Youth Advisory Council Meeting (YAC)

Wednesday, September 2nd— 6:00pm – 7:30pm
Almaden Community Center; 6445 Camden Avenue

Labor Day, September 7th 2009

Almaden Valley Community Association Meeting

Monday, September 14th— 7:00pm – 9:00pm
Almaden Community Center; 6445 Camden Avenue
Topic: Councilmember Pyle will speak about the impact of the State budget cuts on the City of San Jose

District 10 Youth Advisory Council Meeting (YAC)

Wednesday, September 16th— 6:00pm – 7:30pm
Almaden Community Center; 6445 Camden Avenue

Playa Del Rey Neighborhood Association Meeting

Wednesday, September 16th— 7:00pm – 8:30pm
Pearl Library, Community Room;

Hoffman Via Monte Neighborhood Action Coalition

Wednesday, September 16th— 6:30 pm – 8:00 pm
Hoffman Via Monte Neighborhood Center; 1180 Blossom Hill Road

Almaden Art and Wine Festival

Sunday, September 20th— 10:00 am – 6:00 pm
Almaden Lake Park
www.almadenwine.com/

VEP Community Association Meeting

Tuesday, September 22nd— 7:30 pm – 9:00 pm
VEP Community Room; 475 Hyde Park Drive
www.vepca.net/

“One day teaches the other”

~By Lithuanian Proverb

“Anything that happens enough times to irritate you will happen at least once more.”

~By Tom Parkins

You may Unsubscribe (Opt-Out) from future communications, and set your communications preferences [here](#).
You may update your contact information [here](#).